





****GUIDE PRICE - £270,000****

****NO ONWARD CHAIN****

NEXA Properties are delighted to welcome to the market, this three bedroom terrace house situated on Gladys Avenue, Portsmouth.

This property offers spacious living throughout... on the ground floor are two huge reception rooms featuring wood flooring and architrave ceilings, a good size modern kitchen with plenty storage and stylish cooker/hood area and a utility space/room with WC and basin also.

Off the utility area is a conservatory leading to a west facing garden with part slab and artificial grass and a brick built out building.

The first floor is just as impressive in size with three spacious double bedrooms, the master benefitting from fitted wardrobes. Also on the first floor is a family tiled bathroom suite with shower over bath, WC and basin.

This property has the huge added benefit of being offered with no onward chain.

Contact NEXA to arrange your viewing.

- GUIDE PRICE - £270,000
- NO ONWARD CHAIN
- TWO RECEPTION ROOMS
- SPACIOUS GARDEN
- BRICKED OUTBUILDING
- MODERN KITCHEN
- DOUBLE BEDROOMS
- GAS CENTRAL HEATING
- SEPARATE WC
- VIEWINGS HIGHLY RECOMMENDED

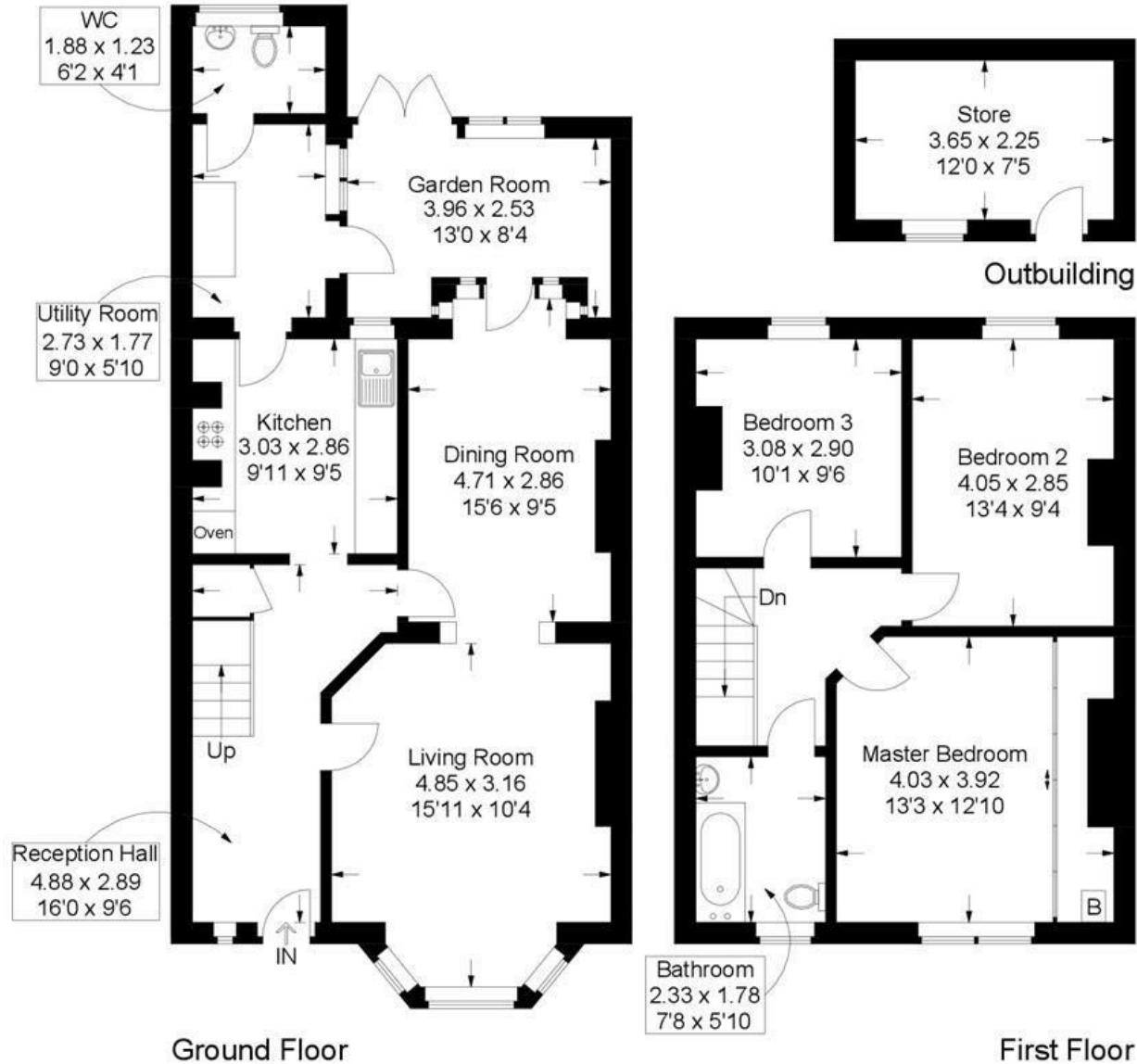


Gladys Avenue, Hilsea

Approximate Gross Internal Area = 119.1 sq m / 1282 sq ft

Outbuilding = 8.4 sq m / 90 sq ft

Total = 127.5 sq m / 1372 sq ft



This plan is for layout guidance only. Not drawn to scale unless stated. Windows and door openings are approximate. Whilst every care is taken in the preparation of this plan, please check all dimensions, shapes and compass bearings before making any decisions reliant upon them.